

# FIRENZE

## Malaparte Business Park



### DESTINAZIONE D'USO

-  Ricettivo Congressuale
-  Medico Sanitario
-  Commerciale
-  Industriale
-  Logistica

### TIPOLOGIA DI PROPOSTA

-  Vendita
-  Investimento
-  Locazione

### STATO

-  Realizzato





### COSTRUZIONE / RIQUALIFICAZIONE

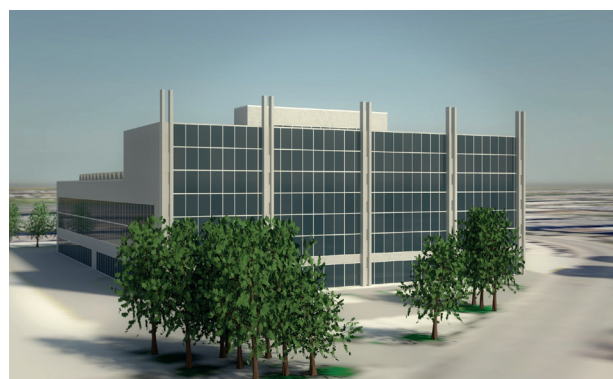
-  1990 / 2007

### TEMPI DI CONSEGNA

-  24 mesi

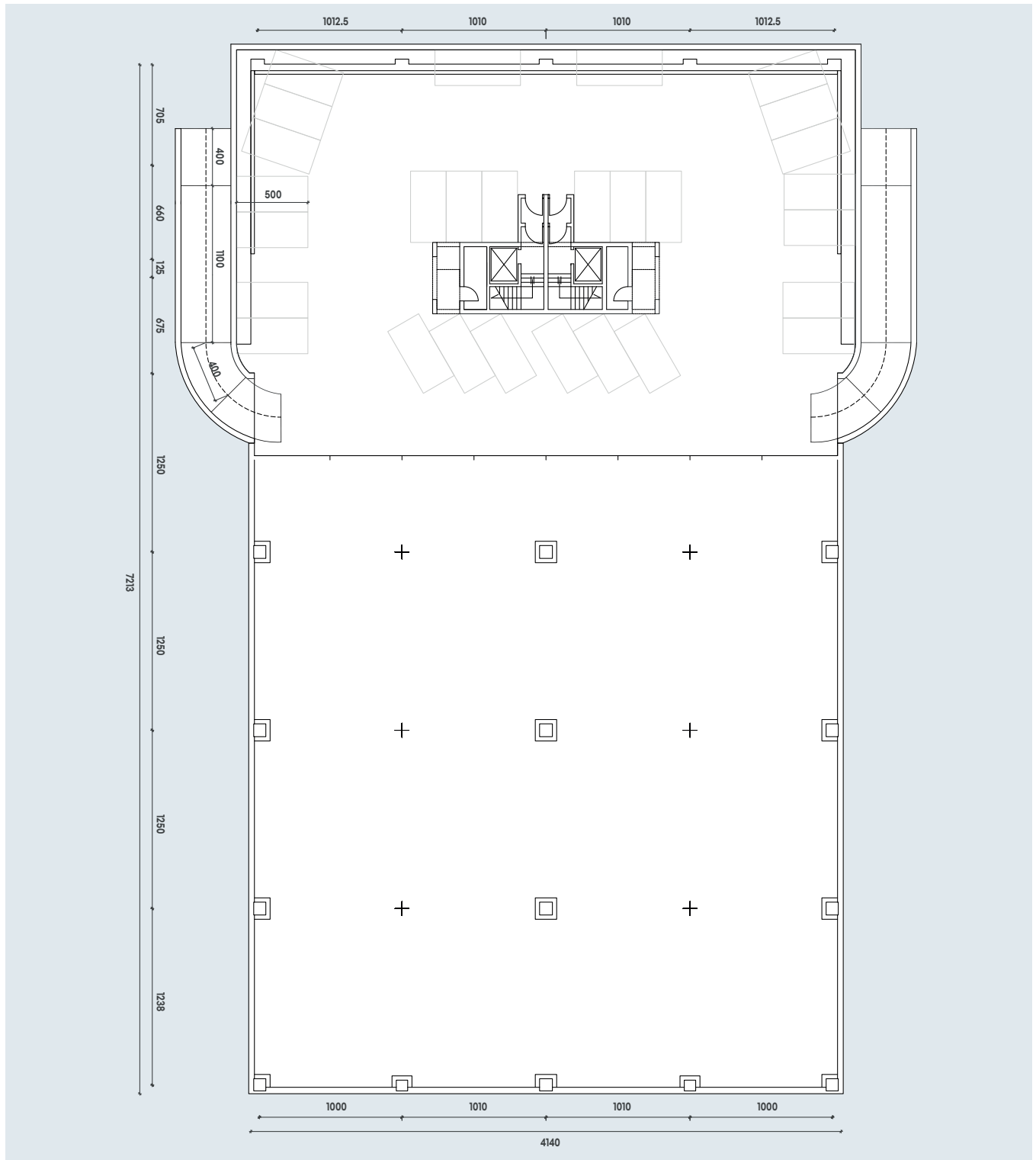
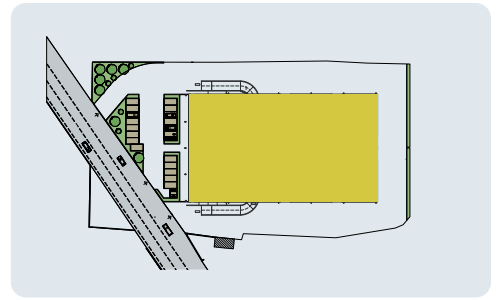
### SERVIZI PRESENTI (PLUS)

-  Ascensore
-  Charger
-  LED
-  Garage



# Malaparte Business Park

## Planimetria

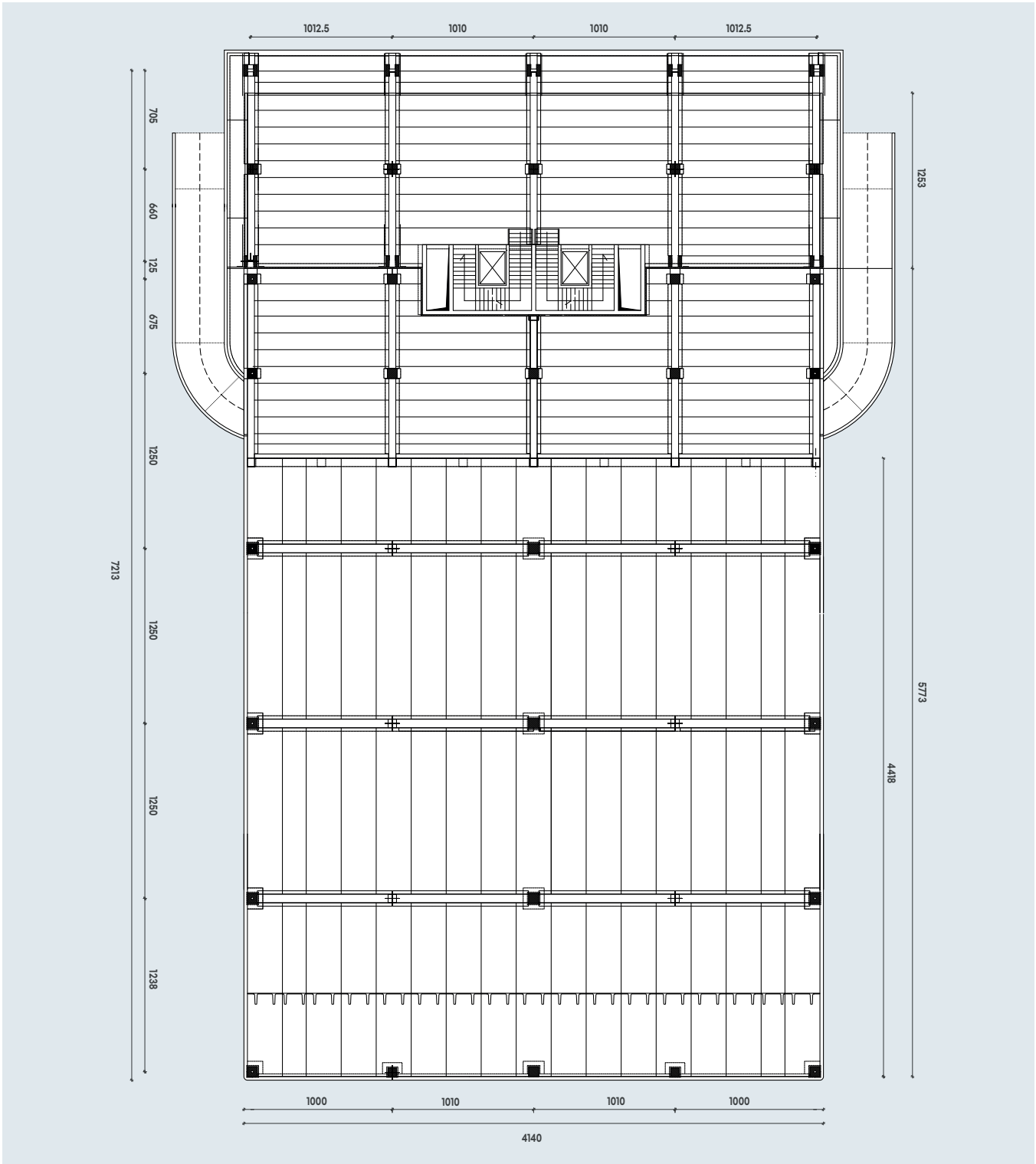
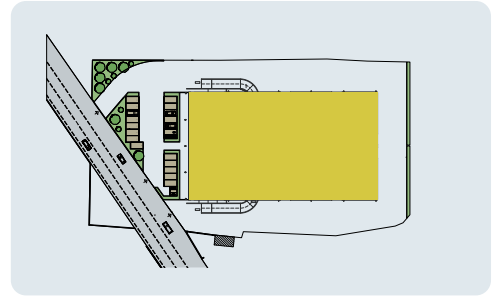


PIANTA PIANO INTERRATO

scala 1:400

# Malaparte Business Park

## Planimetria

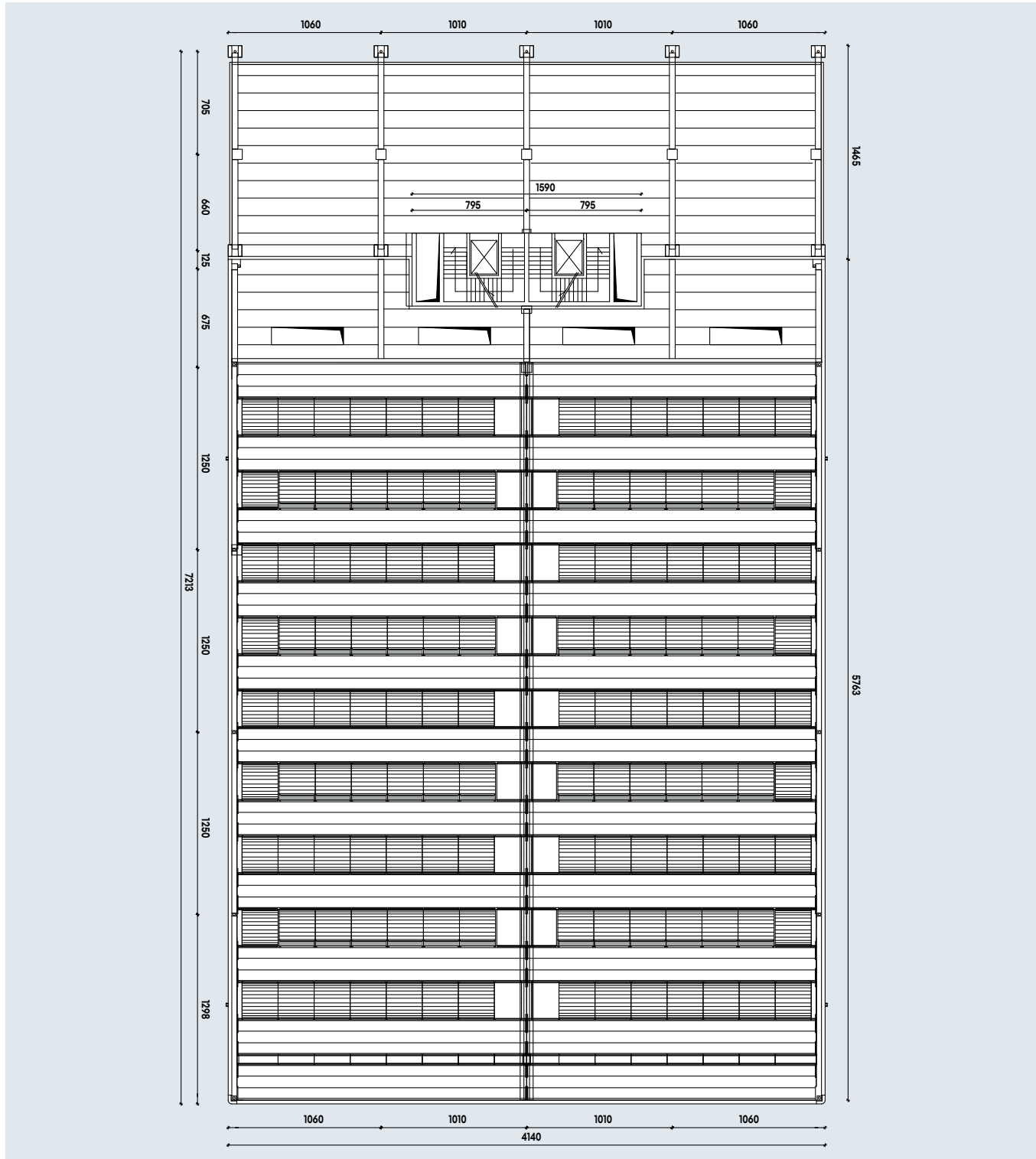
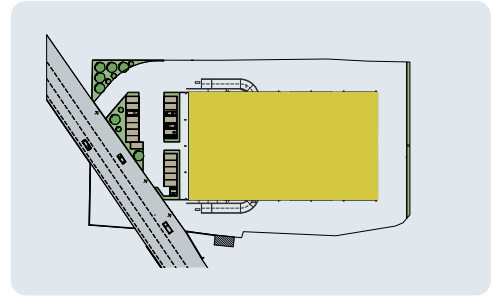


PIANTA PIANO TERRA

scala 1:400

# Malaparte Business Park

## Planimetria

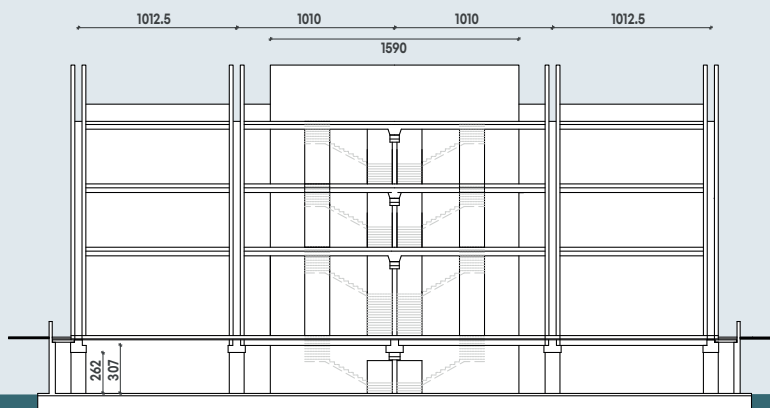
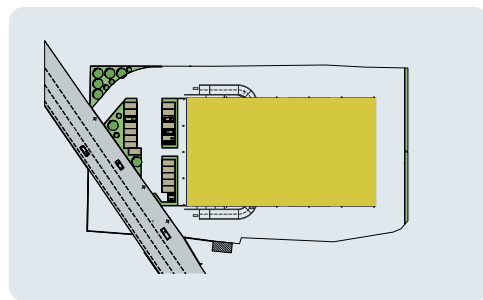


PIANTA PIANO COPERTURA

scala 1:400

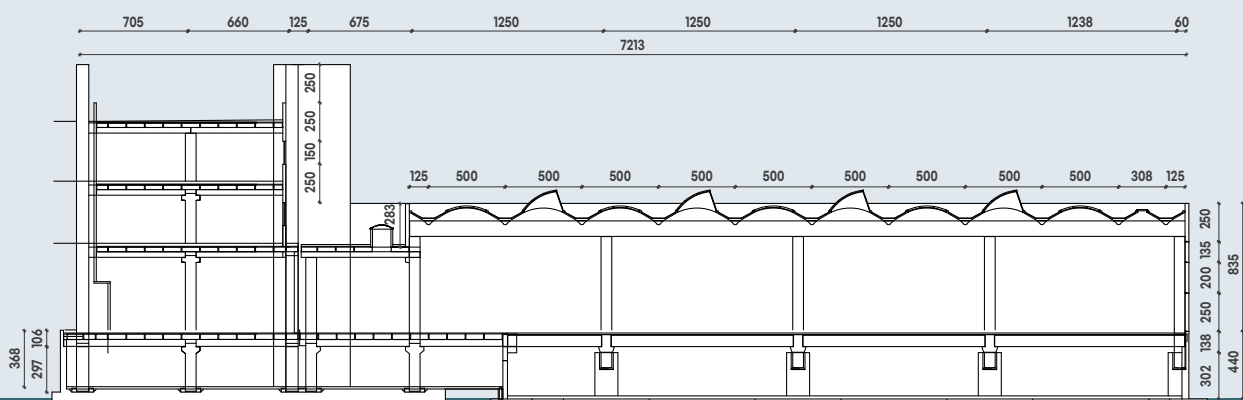
# Malaparte Business Park

## Sezioni



SEZIONE A-A

scala 1:500

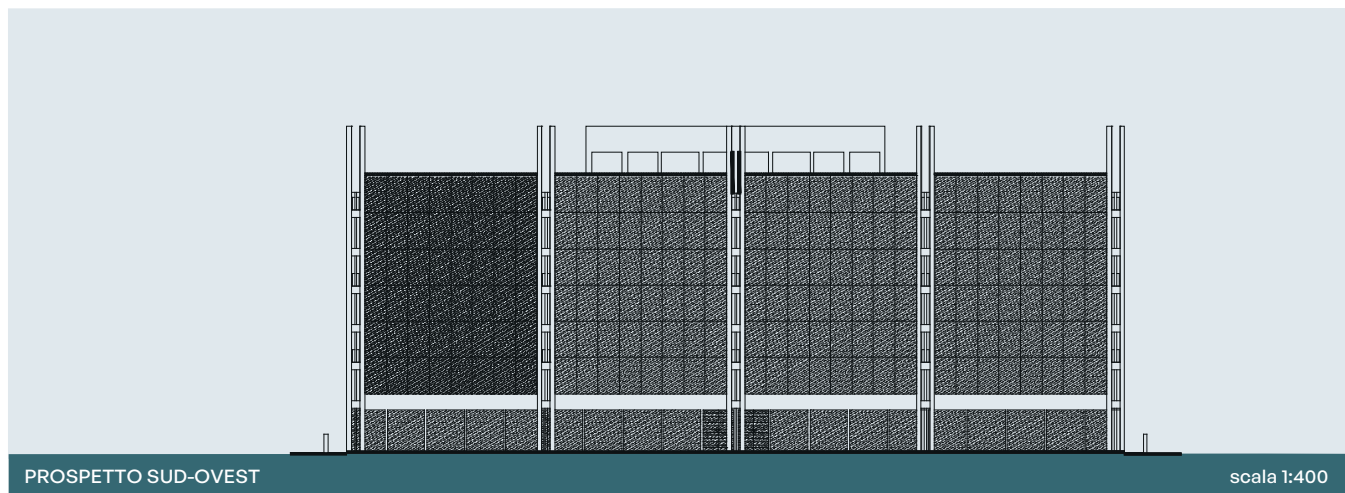
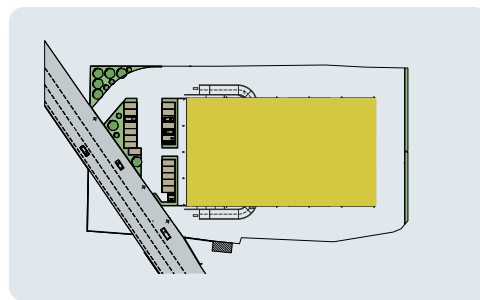


SEZIONE B-B

scala 1:500

# Malaparte Business Park

## Prospetti



### Superfici (mq)

Unità	Magazzino	Uffici servizi	Zona soppalco		Totale	Unità	Magazzino	Uffici servizi	Zona soppalco		Totale
			Piano T.	Piano 1°					Piano T.	Piano 1°	
1	237,92	17,14	187,91	187,91	<b>630,88</b>	7	259,83	33,17		<b>293,00</b>	
2	237,92	17,14	187,91	187,91	<b>630,88</b>	8	259,83	33,17		<b>293,00</b>	
3	259,83	33,17			<b>293,00</b>	9	259,83	33,17		<b>293,00</b>	
4	259,83	33,17			<b>293,00</b>	10	259,83	33,17		<b>293,00</b>	
5	259,83	33,17			<b>293,00</b>	11	237,92	17,14	187,91	187,91	<b>630,88</b>
6	259,83	33,17			<b>293,00</b>	12	237,92	17,14	187,91	187,91	<b>630,88</b>